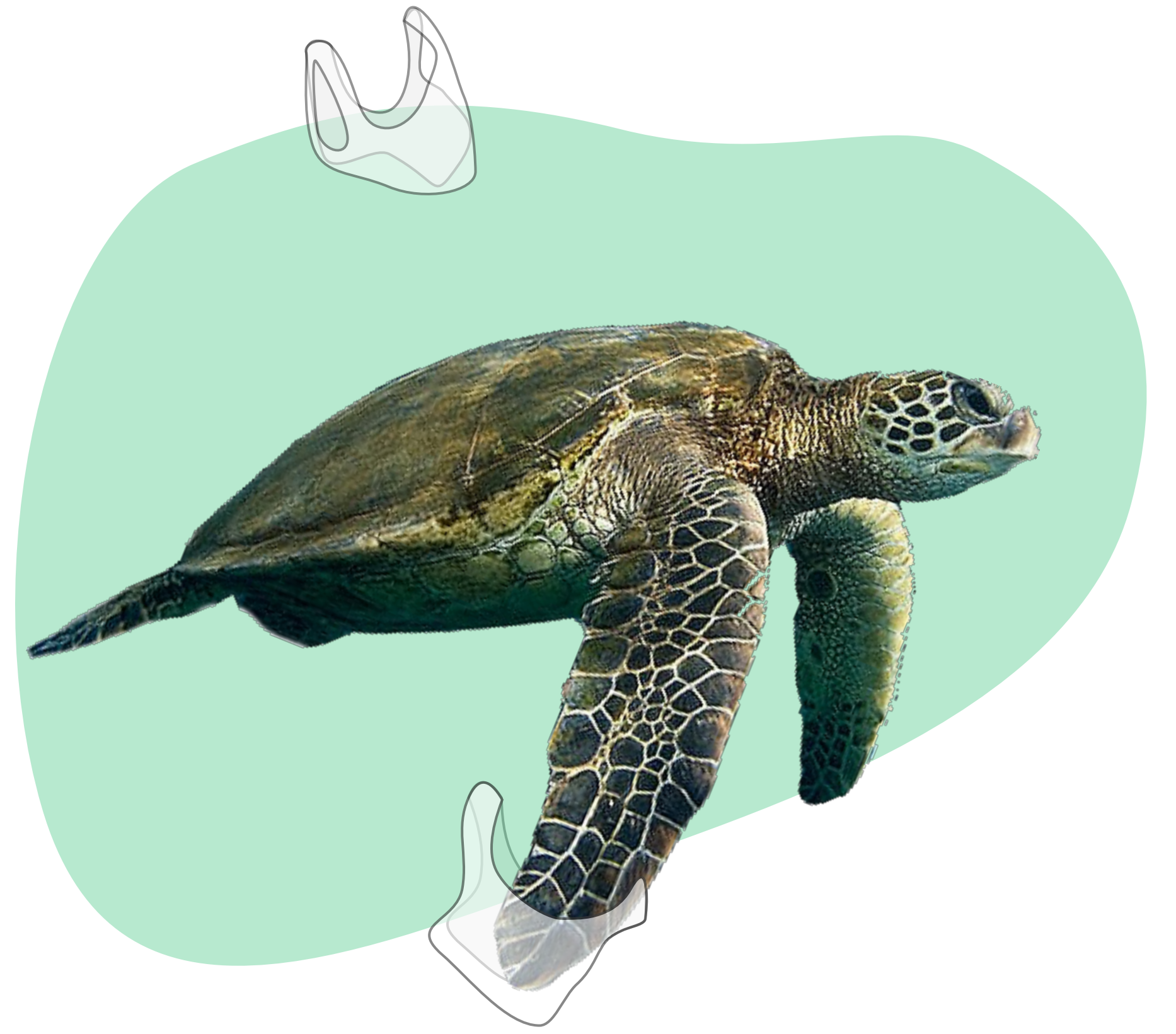
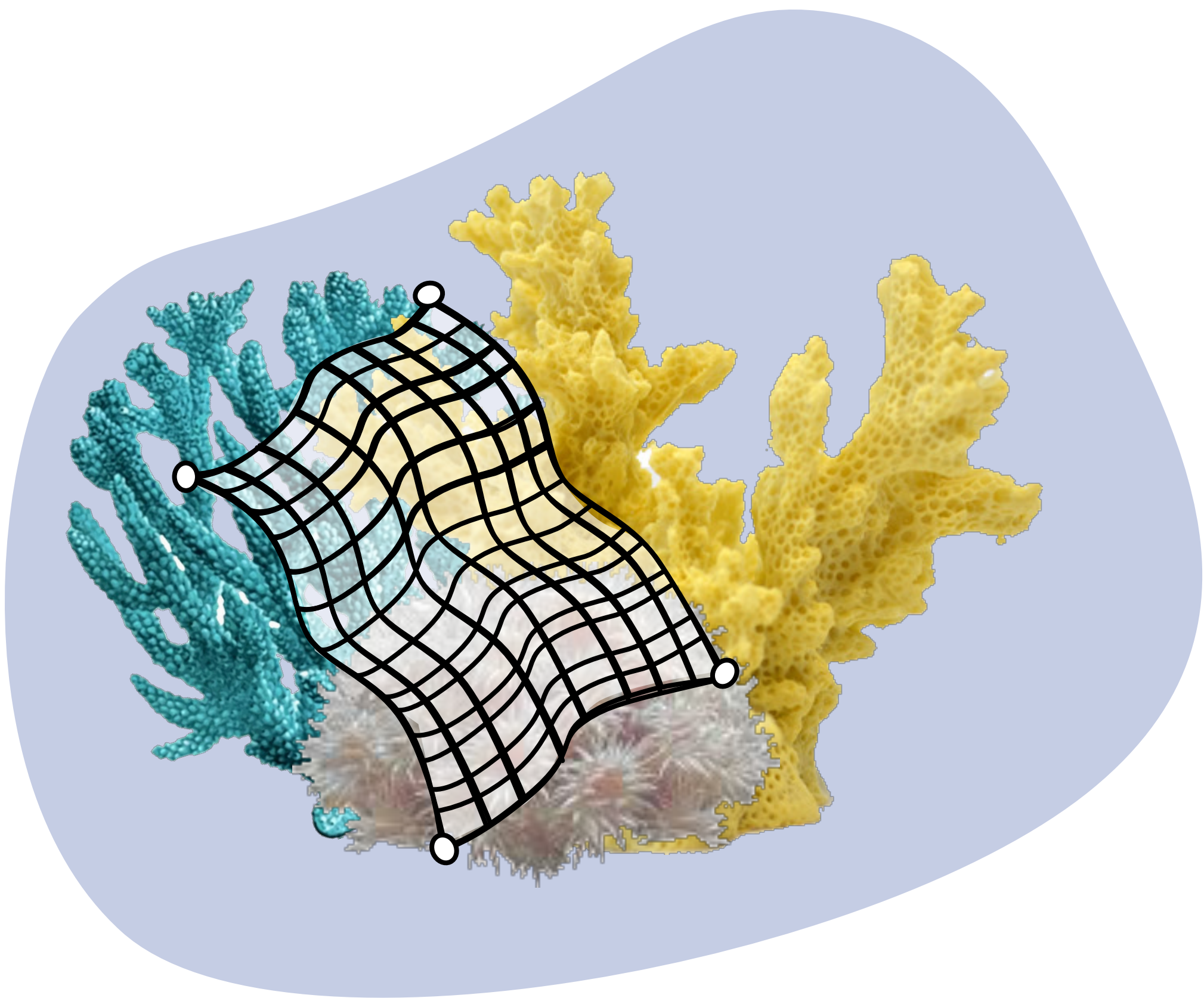


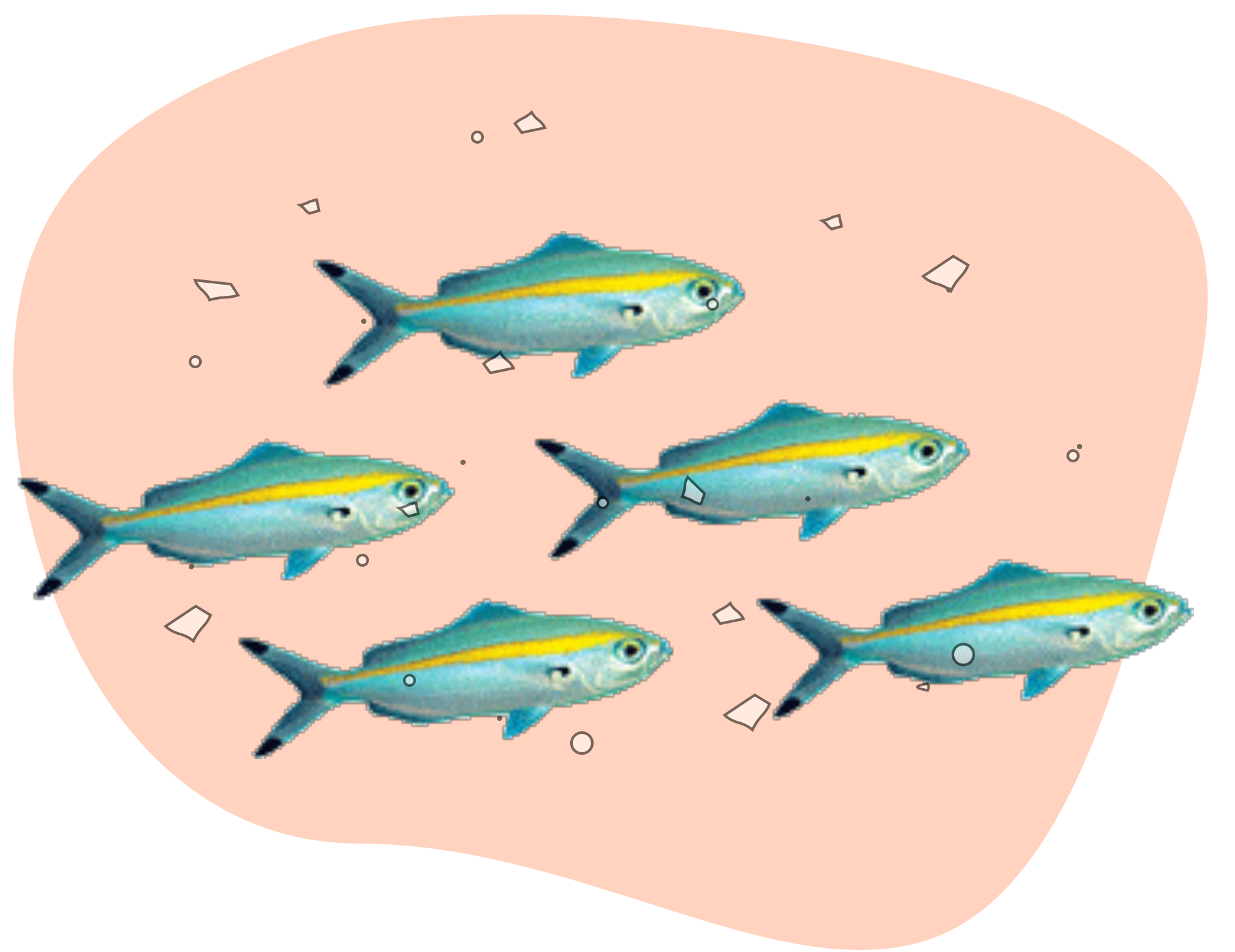
WHALE SHARK



SEA TURTLE



CORAL



FUSILIERS FISH

SEA TURTLES

WHAT ARE THEY?

There are 5 different sea turtles species in the Philippines and they are all considered vulnerable, endangered, or critically endangered. Sea turtles eat crustaceans, jellyfish, sponges, seagrass, and algae. They are essential to healthy coral reef and seagrass ecosystems.

WHAT'S THE ISSUE?

There are many threats to sea turtles, and one of them is marine plastic debris. For example, they often mistake **plastic bags** for jellyfish. The plastic bags get trapped in their stomach and prevent them from eating.

LOOK AT THE PLASTIC BAGS CARD TO LEARN MORE ABOUT THIS ISSUE.

WHALE SHARKS

WHAT ARE THEY?

The Whale shark is the largest fish in the sea reaching up to 40 ft in length. They are known to be filter feeders feeding on plankton as their main source of food. They are considered as Vulnerable in the IUCN red list which indicates a high risk of extinction in the wild in the medium-term future.

WHAT'S THE ISSUE?

Since whale sharks are filter feeders feeding on plankton, they are capable of ingesting tiny plastic particles from **single-use plastics** that may have toxic side effects, and which can block their ability to absorb nutrients.

LOOK AT THE SINGLE-USE PLASTICS CARD TO LEARN MORE ABOUT THIS ISSUE.

FUSILIER FISH

WHAT ARE THEY?

Fusilers are close relatives of snappers that are often seen swimming fast in large schools as they feed on zooplankton in mid-water along the outer reef-slopes. They are both ecologically and economically important, and is locally known as *dalagang bukid*.

WHAT'S THE ISSUE?

Zooplankton, tiny ocean organisms, eat **microplastics** near the surface of the ocean. The zooplankton are then eaten by many fish, like the fusiliers. Finally, humans eat fish and therefore ingest the plastics within them. This is really harmful to our health because some plastic is toxic.

LOOK AT THE MICROPLASTICS CARD TO LEARN MORE ABOUT THIS ISSUE.

CORAL

WHAT ARE THEY?

Corals are sea animals that stay in the same place throughout their life. Inside their hard skeleton are polyps that often live together in large colonies, snatching food from the water with their tentacles. Several types of corals together can form enormous colonies of different colors and shapes, called coral reefs. Coral reefs provide homes to fish and other sea creatures, and protect us from storms.

WHAT'S THE ISSUE?

Coral reefs have been around for millions of years but today, 75% of them are threatened, and so are their inhabitants! Warming temperatures and pollution are threats, but they also get damaged by **fishing nets** & anchors, and take hundreds of years to grow back.

LOOK AT THE FISHING NETS CARD TO LEARN MORE ABOUT THIS ISSUE.